

TEST MATERIALS

Standard Materials for Standards Based Testing

Consistent Quality

Batch after Batch. Test After Test.

Each lot of test materials supplied by SDL Atlas is thoroughly tested to ensure conformity and consistency from batch to batch to provide our customers with the utmost confidence in their standards-based testing. All of the test materials sold are of the highest quality and meet international standards.

SDL Atlas offers the broadest range of test materials in the textile and home appliance testing markets. Our extensive inventory provides a single source solution, plus we offer technical expertise to assist in making testing efficient, precise and compliant.

We offer multifibers and detergents for wash fastness tests, crocking supplies, make weights, pilling supplies, specialized test materials for specific instruments and more. SDL Atlas also has a large selection of test materials for home appliance testing. These include DOE energy cloth, soiled cloth, and standard soil as a few examples.



CERTIFICATE OF CONFORMANCE

Date of Issue: 12/15/2017
Product: AATCC Crockmeter Squares
Part Number: 200877
Batch Number: 0317

We hereby certify that the above product has been evaluated according to appropriate standards and conforms to the specifications as outlined in:

AATCC 8, 61, 116, 163, 165; ASTM D2054, D3690, D5053, D6012; CPSC 16, CFR Parts 1630 and 163; FORD LAB TEST METHOD FLTM BN 107-1 and SAE J861

Our Guarantee: Each batch of test materials supplied by SDL Atlas is tested through rigorous internal inspections to ensure conformity and consistency in order to provide our customers with the utmost confidence in their standards-based testing.

Approved Signatory:

Rick Stanford
 SDL Atlas, General Manager

DETAILED TEST REPORT COLORFASTNESS TO CROCKING: CROCKMETER METHOD



AATCC Test Method 8-2013

14.5 Crockmeter Test (Cloth should meet the following specifications:

Fiber: 100% 10.3 – 16.8 mm combed cotton staple with no optical brightener present
Yarn: 15 tex (40/1 cotton count), 5.9 turns/cm "Z"
Thread Count: For greige fabric: 32± 5 warp ends/cm; 33 ± 5 picks filling/cm
Weave: 1/1 plain
Finished Fabric: Desized and bleached with no optical brightener or finishing material present
pH: 7 ± 1
Mass/sq meter: 100 ± 3 g finished
Whiteness: W = 78 ± 3 (Method 110)

SDL Atlas Crockmeter Squares for AATCC Test Methods – LOT 0416

Specs	AATCC Test Method 8	Target with Tolerance	Result
Greige Fabric			
Fiber	100% 10.3 – 16.8 mm combed cotton staple with no optical brightener present	100% Cotton 10.3 – 16.8 mm staple Combed No Optical Brightener	YES YES YES
Yarn	15 tex (40/1 cotton count), 5.9 turns/cm "Z"	15 tex (40/1 cotton count) 5.9 turns/cm Direction "Z"	YES YES "Z"
Thread Count	For greige fabric: 32± 5 warp ends/cm; 33 ± 5 picks filling/cm	32± 5 warp ends/cm 33 ± 5 filling/cm	32 ends/cm 32 filling/cm
Weave	1/1 plain	1/1	YES
Finished Fabric			
pH	7 ± 1	AATCC TM 81	6.9
Mass/Sq meter	100 ± 3 g finished	100 ± 3 g finished	99 grams/m ²
Whiteness	W = 78 ± 3 (Method 110)	AATCC TM 110	W = 78

**QUALITY CHECKED
 * PASSED ***

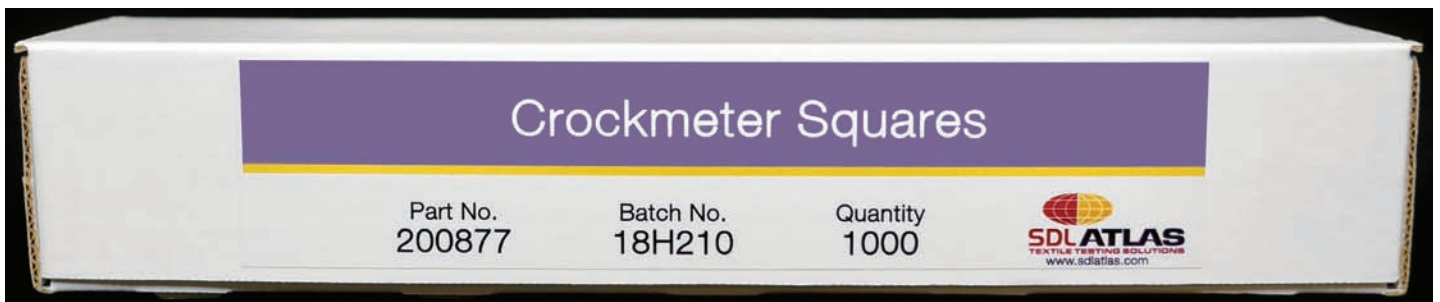
3304 Alway Drive Rock Hill, SC 29732 • Phone: 803-329-2110 • Fax: 803-329-2133
www.sdlatlas.com • info@sdlatlas.com

Each item comes with an official Certificate of Conformity detailing the compliance to standards while consistency is ensured by archiving every tested sample – logging and documenting every lot.

Crockmeter Test Materials

SDL Atlas manufactures high quality Pre-Cut Crocking Cloth for all major international standards including AATCC, ISO, Next, and M&S standards. We also supply Verification Fabric, Green Felt and Emery Paper for your convenience.

Each lot of Crocking Test Materials supplied by SDL Atlas is thoroughly tested to ensure conformity and consistency from batch to batch to provide our customers with the utmost confidence in their standards-based testing.



Ordering Information

Crockmeter Squares for American Standards 2" x 2" 1,000 pieces	200877
Crockmeter Fabric for American Standards per meter	200878
Crockmeter Squares for European Standards 2" x 2" 500 pieces	403086
Crockmeter Fabric for European Standards per meter	403011
Verification Fabric 2" x 6" 25 pieces	103871
Green Felt 2" x 2" 1,000 pieces	201059
Emery Paper 25 sheets	103872



2" x 2" Cocksquare



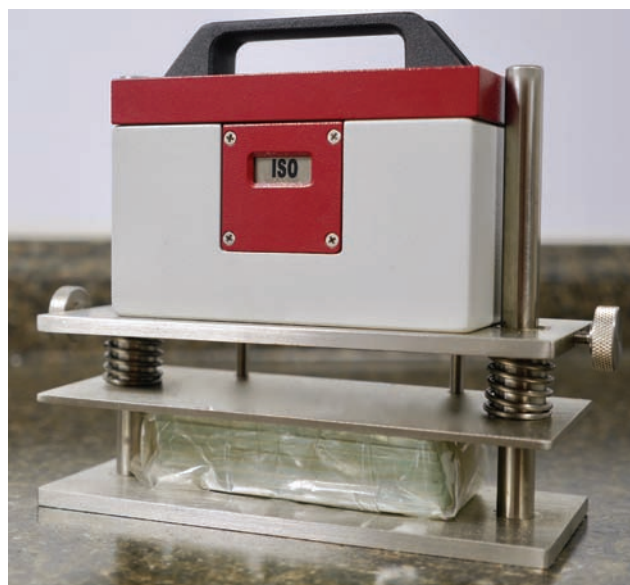
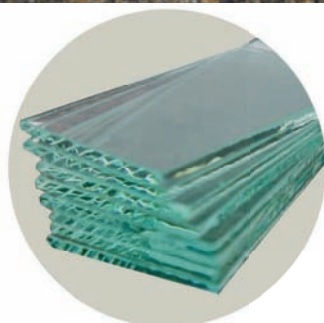
Cocksquare mounted

Phenolic Yellowing

The Phenotest was developed to assess the potential of light textiles to yellow while in its package. SDL Atlas provides the necessary Test Materials for performing phenolic yellowing tests for ISO, AATCC, Next and M&S Standards.



Phenotest Test Materials



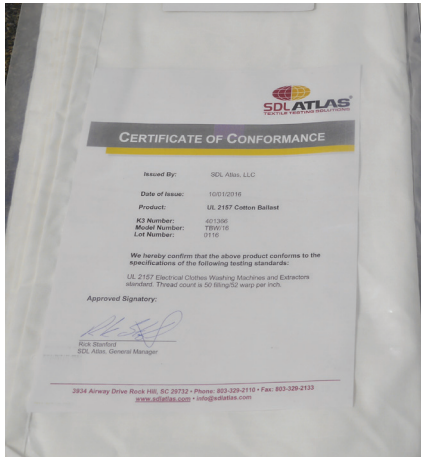
ISO Phenotest in preparation

Ordering Information

Impregnated Test Paper, pack of 30	107345
Impregnated Test Paper, pack of 150	106432
Phenotest Control Fabric, pack of 30	203038
Phenotest BHT-Free Plastic Film, pack of 15	106930
Phenotest Glass Plates, pack of 10	200929
Film Cutting Template	201053

Wash Testing

SDL Atlas manufactures a variety of ballast and wash loads for shrinkage and durability testing. In addition, we carry a full range of detergents for wash and colorfastness tests.



100% Cotton Ballasts



ECE and IEC Detergents



AATCC Detergents

Ballast Ordering Information

Type III Knitted 100% Polyester Ballast, 20 x 20 cm	403275
100% Knitted Polyester Ballast, 30 x 30 cm	203564
AATCC Type I Ballast 100% Woven Cotton, 36 x 36 in	401357
AATCC Type III Ballast 50/50% Woven Polyester Cotton, 36 x 36 in	401365
50/50 Poly Cotton Mommie Cloth, Double Hemmed - 22" x 34"	403398
50/50 Poly Cotton Mommie Cloth, Double Hemmed - 10" x 10"	403399
Underwriters Laboratories (UL) 2157 100% Cotton Ballast, Double Hemmed - 22" x 34"	401366
Underwriters Laboratories (UL) 2157 100% Cotton Ballast, Double Hemmed - 10" x 10"	401365
Danish Mechanical Action 5-Hole Cloth, 100% Cotton - 24 cm x 24 cm	400437
Danish Mechanical Action 5-Hole Cloth, 100% Cotton - 40 cm x 40 cm	302866
5-Hole Mechanical Action Cloth, 100% Cotton - 8.5" x 9"	403384
5-Hole Mechanical Action Cloth, 100% Cotton - 14" x 15"	403385

Detergent Ordering Information

ECE Non-Phosphate Reference A Detergent - 2 kg	403235
ECE Non-Phosphate Reference A Detergent - 15 kg	403236
ECE Phosphate Reference B Detergent - 2 kg	403237
ECE Phosphate Reference B Detergent - 15 kg, For ISO C06	403238
IEC Non-Phosphate Reference A Detergent - 2 kg	403239
IEC Non-Phosphate Reference A Detergent - 15 kg	403240
TAED (Tetraacytelethylenediamine) - 250 gm	403408
Perksheen Detergent, 1 gallon	201061
Sodium Perborate Tetrahydrate, 1 kg	401149
AATCC 1993 Reference Detergent with optical brighter, per lb	202167
AATCC 1993 Reference Detergent without optical brighter, per 24 lb	201858
AHAM Standard Detergent Formula 3 - per kg, For AHAM HLW-I	203107

Pilling/Snagging Testing Materials

SDL Atlas provides the necessary Test Materials for performing all major test methods for Pilling and Snagging tests using the RotaPill Pilling and Snagging Tester and the Random Tumble Pilling Tester.

Our high quality items such as cork liners, cotton sliver, sample tubes, templates, mounting jigs and much more have provided confidence that results achieved will remain consistent from test to test.



Random Tumble Pilling Tester with Cork Liners



RotaPill Test Materials

Ordering Information

Random Tumble Pilling Tester Test Materials

Cork Liners (50 pack)	200771
Cotton Sliver (9 meters)	202324
White Adhesive	400112

RotaPill Test Materials

Sample Tubes (pack of 4)	101026
Unmounted Cork Linings (pack of 6)	101027
Snagging Points (set of 6)	107701
M&S Sample Tubes & Locking Rings (set of 8)	106841
M&S Liner and Step for Pilling & Snagging Drum	106885
Felt for Octagonal Snagging Drum Test	200947



RotaPill box with Cork Linings and Sample Tubes



Cork Liners



Cotton Sliver



White Adhesive



Sample Tubes

Martindale Test Materials

SDL Atlas supplies a wide variety of Test Materials designed specifically for testing on the Martindale Abrasion and Pilling Testers. From standard abrasion and pilling tests to performing specialty tests for everything from flooring, gloves, socks, polished surfaces and more, our Test Materials will ensure that each test performed is reliable every time.



Martindale Test Materials

Martindale Abrasion and Pilling Tester ready to perform abrasion testing



Abradant Fabric Cut to Size

Ordering Information

SM25 Wool Abradant Fabric, 5 meters	403253
Felt Discs, 90 mm (pack of 20)	200910
Felt Discs, Woven 140 mm (pack of 20)	200971
Felt Discs, Nonwoven 140 mm (pack of 20)	200946
Felt, Woven, 1 m x 1.5 m	200947
Felt, Nonwoven, 1 m x 1.5 m	200945
Standard Backing Foam	108179
Sample Retaining Rings (pack of 20)	105136
Abrasion Sheets (pack of 20)	200944
PL3IB Grit 180 Abrasion Paper (50 sheets)	107765
Silicon Carbide Paper (pack of 25)	200943
Trizact Synthetic Abrasion Discs, Green, 35 Microns (pack of 25)	201077
Trizact Synthetic Abrasion Discs, Orange, 5 Microns (pack of 25)	203289

Other abrasants can be supplied to meet any testing needs. Contact a SDL Atlas Test Materials Expert for more information.

Multifiber Fabric for AATCC and

SDL Atlas supplies multifiber fabric in a variety of sizes to meet all AATCC and ISO standards for assessing color transfer in color fastness testing. Available in Cold Cast, Heat Sealed and Overcast, each box of multifiber supplied by SDL Atlas is thoroughly tested to ensure conformity and consistency from batch to batch to provide our customers with the utmost confidence in their standards-based testing. AATCC multifiber is sold by the pre-cut by the box or in 45" (114 cm) rolls by the meter.

Our DW and LW multifiber meet international and retailer standards and have been accepted by labs and retailers as a substitute for other existing brands.



Stained Multifiber from Rotawash Container



Each box comes with a Certificate of Conformance



Close-Up of SDL Atlas Multifiber



Box of Multifiber Pieces



Multifiber by the Roll

ISO Standards

Ordering Information

AATCC FA #10 - Six filling stripes with 2-inch repeat, Filament Acetate, Bleached Cotton, Spun Nylon 6.6, Spun Polyester, Spun Acrylic, Worsted Wool. Available in Heat Sealed (HS), Cold Cut (CC), or Overcast (OE) finishing

45" (115 cm) by the Meter	200883
2" X 2" FA -1000 pieces	200882 (HS), 203064 (CC), 401725 (OE)
2" X 4" FA -1000 pieces	300294 (HS), 300292 (CC), 401718 (OE)
2" X 6" FA -1000 pieces	300297 (HS), 300295 (CC), 300296 (OE)

ISO & M&S FAA #10A - Six filling stripes with 10-cm repeat, Filament Acetate, Bleached Cotton, Spun Nylon 6.6, Spun Polyester, Spun Acrylic, Worsted Wool. Available in Heat Sealed (HS), Cold Cut (CC), or Overcast (OE) finishing.

45" (115 cm) by the Meter	200881
4 cm X 10 cm FAA -1000 pieces	200879 (HS), 300298 (CC), 400890 (OE)
5 cm X 10 cm FAA -1000 pieces	300302 (HS), 300300 (CC), 400891 (OE)

AATCC FB #1 - Six filling stripes with 5-cm repeat, Filament Acetate, Bleached Cotton, Spun Nylon 6.6, Spun Silk, Spun Rayon, Worsted Wool. Available in Heat Sealed (HS), Cold Cut (CC), or Overcast (OE) finishing

34" (86 cm) by the Meter	200885
2" X 2" FB -1000 pieces	200884 (HS), 300304 (CC), 400894 (OE)
2" X 4" FB -1000 pieces	300308 (HS), 300306 (CC), 300307 (OE)

ISO TV - For High Temperature Wash Testing. Six components yarn stripes, each measuring 15 mm. Consisting Filament Triacetate, Bleached Cotton, Spun Nylon 6.6, Spun Polyester, Spun Acrylic & Spun Viscose

4 cm X 10 cm -1000 pieces	300317
5 cm X 10 cm -1000 pieces	300319
10 Meter Roll	200828

ISO DW - Six components yarn stripes, each measuring 15 mm. Consisting Filament Diacetate, Bleached Cotton, Spun Nylon 6.6, Spun Polyester, Spun Acrylic & Worsted Wool

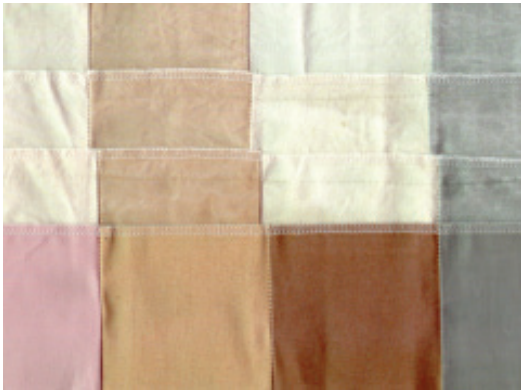
4 cm X 10 cm -1000 pieces	300286
5 cm X 10 cm -1000 pieces	300287
4 cm X 10 cm -250 pieces	403279
5 cm X 10 cm -200 pieces	403280
10 Meter Roll	403277
50 Meter Roll	403278

LW - For M&S and Retailer Methods. Six component yarn stripes, each measuring 15 mm. Consisting Regenerated Cellulose, Bleached Cotton, Spun Nylon 6.6, Spun Polyester, Spun Acrylic & Worsted Wool

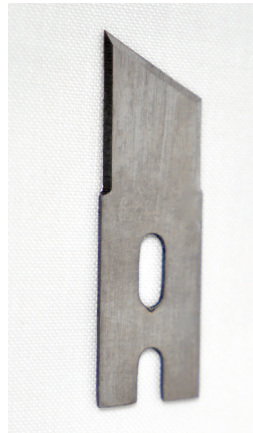
10 Meter Roll	403281
50 Meter Roll	403282

Other Test Materials

In addition to the items specifically mentioned here, SDL Atlas provides the most diverse variety of Test Material available from a single source. These pages show just a small sampling of what else we offer. For more information on SDL Atlas Test Materials, or to request a quote, contact an SDL Atlas solutions expert today.



Pre-stained Fabrics



Replacement Cutting Blades



Ball Bearings for Colorfastness Testing



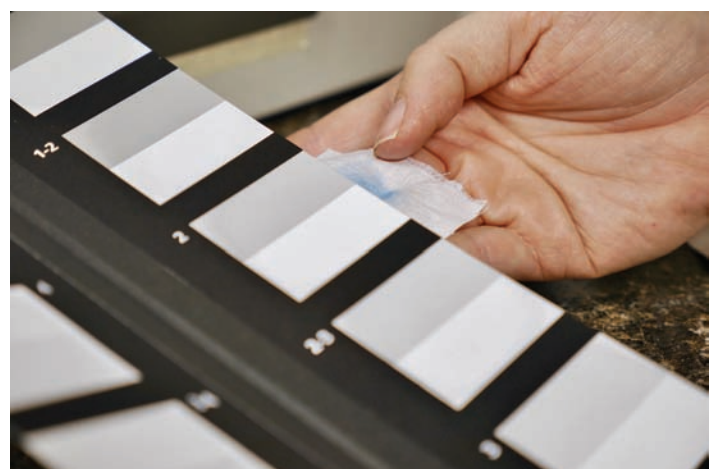
MMT Control Fabric



Universal Wear Tester Testing Materials



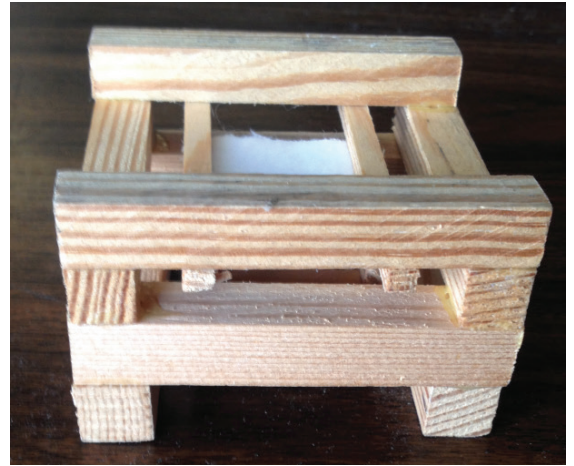
Burst Tester Verification Fabric



Gray Scales for Staining and Color Change



Flammability Test Materials



Wooden Cribs



Specialty Fabrics



Lightfastness Test Materials



Snagging Test Materials



Bursting Diaphragms

To download a complete Test Materials Catalog, visit our website at www.sdlatlas.com.

Providing Confidence

For over 60 years, the SDL Atlas companies have been providing confidence in standard based testing through expertise and global partnering. Our customers can be assured that they are making informed decisions based on accurate test results.

SDL Atlas experts work closely with standards committees and retailers on development of standards. Our engineers develop instruments to meet these standards. Our service team calibrates the instruments to exacting UKAS and internal standards. High quality test materials that are consistent from batch to batch are also produced and distributed by SDL Atlas.

Fabrics and Test Materials

Test Materials are a critical part of many textile tests. SDL Atlas produces and distributes a complete line of test materials. Each batch is thoroughly tested to ensure conformity and consistency from batch to batch.

Our test materials offerings include:

- Multifiber
- Cork Liners
- Abradents
- Phenolic Yellowing
- Detergents
- Ballasts
- Crocking Fabric

Calibration & Service

- UKAS calibration
- ISO calibration
- Service support
- Factory trained representatives
- SDL Atlas service technicians



With UKAS accredited technicians located in Europe, Asia, and North America, we are prepared to support our customers in maintaining their investment and their confidence in their test instruments. SDL Atlas calibration certificates are accepted by all accreditors.

Providing confidence in standard based testing
Through expertise and global partnering



SDL ATLAS LLC

3934 Airway Drive
Rock Hill, SC 29732-9200, USA
Telephone: +1 803 329 2110
Facsimile: +1 803 329 2133
Website: www.sdlatlas.com
Email: info@sdlatlas.com

SDL ATLAS LTD.

1B, Building B, Junxiang Da Mansion
No. 9 Zhongshan Yuan Road, Nanshan
Shenzhen, 518052, P.R.C.
Telephone: +86 (755) 2671 1168
Facsimile: +86 (755) 2671 1337
Website: www.sdlatlas.com
Email: info@sdlatlas.com.cn

SDL ATLAS LTD.

3J, Garment Centre, 576 Castle Peak Road,
Kowloon, Hong Kong.
Telephone: (852) 3443 4888
Facsimile: (852) 3443 4999
Website: www.sdlatlas.com
Email: info@sdlatlas.com.cn